

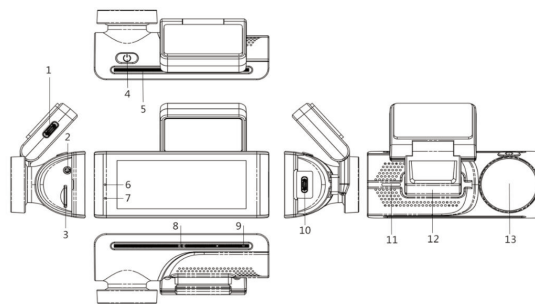
V108 User Manual



Contents

Product Structure:	3
Set up and installation	4
Wi-Fi feature:	5
GPS feature:	5
Power Tools:	6
Icons on the screen display:	7
Specification:	9
Common faults	10
Note:	11

Product Structure:

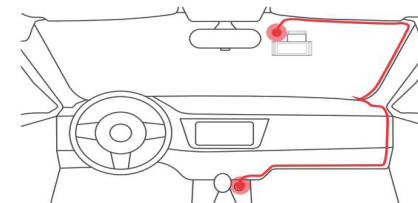


1. Power charging port on holder
2. Rear camera port
3. Micro SD card slot
4. Power
 - Long press 3seconds to power device ON/OFF
 - Short press to Start/Stop recording
5. Microphone
6. Power indicator
 - The blue light remains on when the device is on.
7. Recording indicator
 - Flashing in red when recording
8. Gesture recognition sensor
 - Gesture recognition function: Slide your hand to lock the video/take a photo
9. Reset
10. Power charging port on body
 - For transferring data by short Type-C USB cable

11. Speaker
12. Magnetic connection
13. Lens

Set up and installation

1. Use the 3M holder sticker mount to install the V108 dashcam on the windshield, recommended position is near the rearview mirror (With the display screen and inside lens towards the passenger seats.), adjust both lens angle for best coverage.
2. Plug the included power adapter into the car cigarette lighter socket, the indicator will light up when power is on.
3. Connect the power adapter to the dash cam, and route the excess cable alongside the interior trim for better looking.
4. Insert a Micro SD card into the dash cam to store video,(Class 10 above, 32GB and 64GB storage are suggested)
5. Start your car, the camera will automatically power on, be sure the camera lens is clean and there is nothing blocking the lens before driving.



Wi-Fi feature:

Step 1. Search 'DashGo' on Apple store or Google play, then download and install this APP on your phone

Android



IOS



Step 2 . Turn on the WiFi network, in the Dash Cam "System setting" option, then open 'WLAN' of the phone

Step 3 . Connect your phone to the Dash Cam's WiFi network. Open the mobile phone Setting page, select WLAN selection and connect Wi-Fi name: V108_xxxx , then enter the password, default password is 12345678

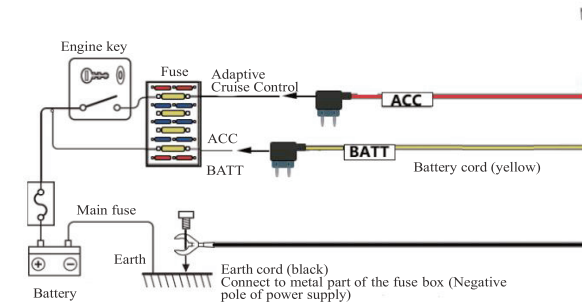
Step 4 . After connecting successfully, back to APP to view real-time view, take video/photo, video/photo playback etc.

GPS feature:

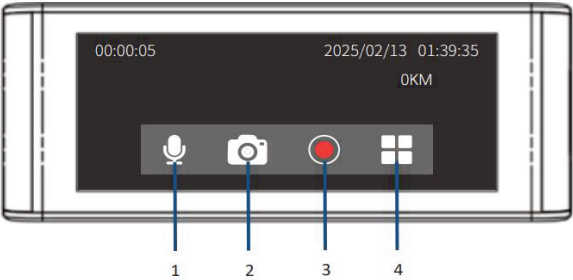
The device is equipped with a GPS positioning module, which can simultaneously record the user's driving trajectory information, and the GPS information will be displayed in the video playback. Users can view the video and all GPS information through the PC-side GPS viewer "DashGo". To download the free GPS player, please visit: <http://sstick.meiyuankeji.top/privacy/DashGo.exe>

Power Tools:

1. Type-C Power Cable Car Charge
2. Hardwire Kit



Icons on the screen display:



- 1. Microphone: Short press to turn ON/OFF video voice
- 2. Photo: Short press to take a photo
- 3. Video: Short press to Start/Stop recording video
- 4. Menu: Short press to enter into menu



Video Setting:

- 1. Resolution: 2160P+1080P 1440P+1080P
- 2. Loop recording: Select 1/2/3 minutes recording (Default 1 minute)
- 3. G-sensor: Low/Medium/High (Default Medium)
- 4. Back mirror: On/Off (Turn on the Back Camera).
- 5. Switch sound - On/Off (Default On).
- 6. Auto display off: 1/3/5minutes (Turn off the dashcam screen while still recording. Default Off)
- 7. WDR: On/Off (Default On)
- 8. Date Stamp: On/Off (Default On)
- 9. Parking monitor: With an ACC hardware kit, the camera takes with parking mode feature, select Off/On option

Playback

Browse the files with left arrow and right arrow
Press the triangle icon to Play/Stop Videos/Photos
Protect: Lock/Unlock the current file displayed
Delete: Delete current file, choose OK/Cancel to erase or not.

System Setting

- 1. Wi-Fi: On/Off (Find your wifi and password)
- 2. APP Connection: Search “DashGo” in Google play or Apple store to download APP
- 3. Camera display: Front Camera/Rear Camera/Split Screen (Split screen enables viewing front and rear cameras at the same time on the dashcam)
- 4. Speed watermark: On/Off/ 60-150MPH (The speed watermark can also be auto turn off at your selected speed)
- 5. TimeZone: Set the correct time zone to get correct time

- 6. Language: According to the use to choose correct language
- 7. Beep Sound: On/Off
- 8. Default setting: On/Off (Select Yes to change all the setting back to original setting)
- 9. Date/Time: Update With GPS
- 10. FW version: Software Version
- 11. Gesture sensor: Touch the bottom to Take picture/Lock video (Default Take picture)
- 12. SpeedUnit: MPH/KMH
- 13. GPS: On/Off
- 14. Format: Clear Memory

Return

Back to main screen

Specification:

Chipset	NOVATEK 96670 (DDR 2GB)
Sensor	Front sensor: GC4653 Rear sensor: SC2336
Video Resolution	With rear camera: 2160P+1080P Without rear camera: 3840*2160 P30

Display Screen	3.16” IPS touch
Viewing Angle	170° (Front) + 140° (Rear)
Aperture	F 1.6 (Front) + F 1.8 (Rear)
Video Format	TS
Video Compression	H.265
G-Sensor Lock	Support
Language	English etc.
Storage	Micro SD Card, max support 256GB, Class 10
USB Interface	Mini USB/Type-C
Super Capacitor	Built in
Hardwire Kit	DV 5V/2.5A
Storage	-30℃~75℃
Operating	-20℃~65℃

Common faults

DVR doesn’t turn on: Ensure that the vehicle is in the ignition on state and power is in connection

DVR cannot record: Check whether the SD card is full or damaged. Format the SD card or replace the new SD card for troubleshooting

Unclear picture quality: check the DVR lens and windshield

Note:

Specifications could be subject to modification due to upgrading or revising. Please regard the actual product as the standard form.